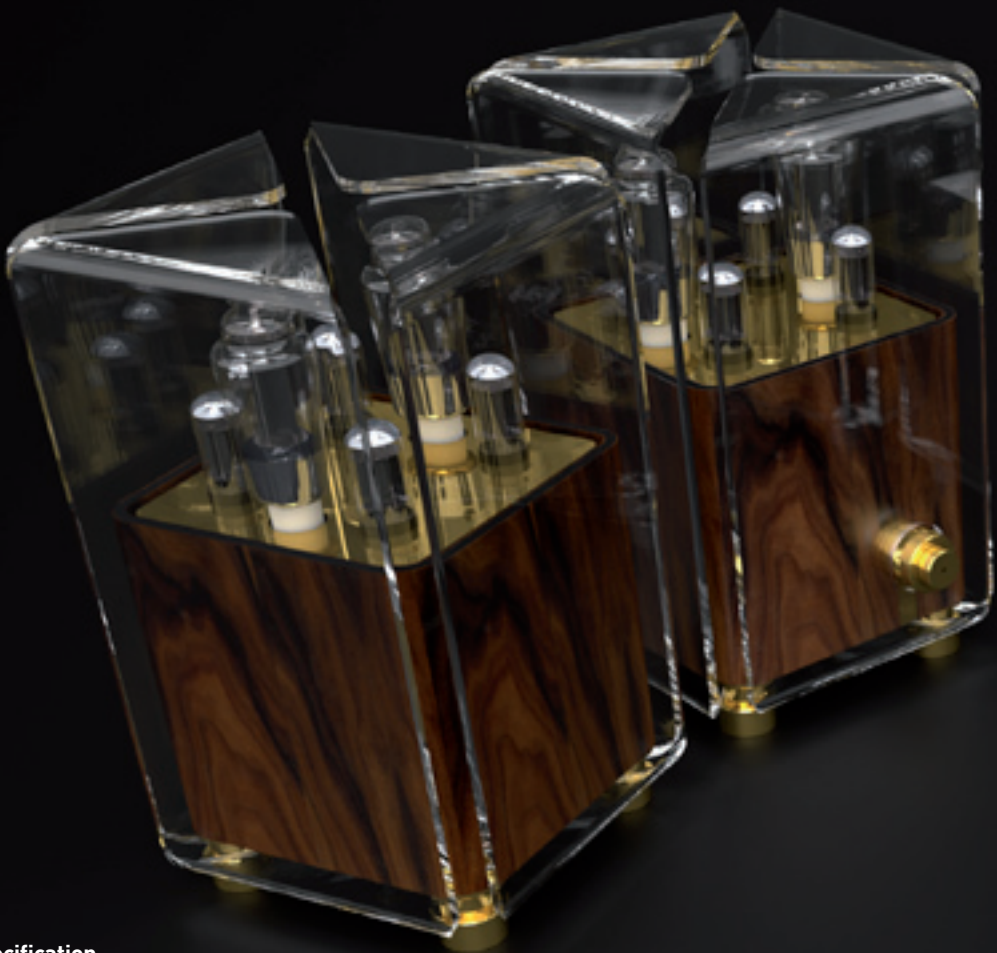


THE LARS™

THE LARS™

THE LARS type 1 is an integrated and fully balanced 16WPC amplifier using 300B tubes, optimized for lowest distortion, best linearity and deep class A operation mode. Attenuator and input selector are relay controlled and are maneuvered from one of the amplifiers. The sound is light, detailed, transparent and fast.



Technical data specification

THE LARS (Type One):

Power output at 1% THD, 1 kHz: 20W

Sensitivity: 150mV for full output power

Input impedance: 5kohm

Output impedance: 4 or 8 Ohm selectable.
16 Ohm on special order

Frequency response
+0dB -1dB: 10Hz – 40 kHz

THD (BW 70kHz)
100 Hz to 10 kHz, 16W less than 0,5%

IMD (DIN) 250 Hz / 8 kHz 4:1, 12W:
less than 0.3%

Hum and noise:
70dB below full output voltage

Tubes: 2 x 300B, 2 x 6V6GT, 6188, 2 x GZ34

Mains power:
115V / 230V selectable, 50Hz – 60Hz, 200W

Dimensions (W x H x D):
300 x 500 x 380mm each

Weight per monoblock: 21kg

Named after its inventor

The amplifier THE LARS by Engström & Engström is named after its inventor and the company founder Lars Engström. THE LARS is his childhood dreams come true. Lars Engström was only twelve years old when he constructed his first amplifiers. His talent for engineering nourished his ambition to create an amplifier which could produce perfectly pure sound.

Zero TIM

Influenced by the work of Dr. Otala in Finland, Lars Engström was determined to eliminate the damaging effects of negative feedback which causes TIM, Transient Inter Modulation distortion. This involved a linear construction which amplified sound without changing it. All the components were chosen to support a linear process of amplification. Triodes, for example, are the most linear types of tubes.

Class A balanced coupling

To remedy Total Harmonic Distortion (overtones) Lars employed balanced coupling throughout the amplifier together with Class A operating conditions. Carefully selected tubes and stringent control of component values keep Inter Modulation Distortion (IMD) to a minimum.

Foil capacitors

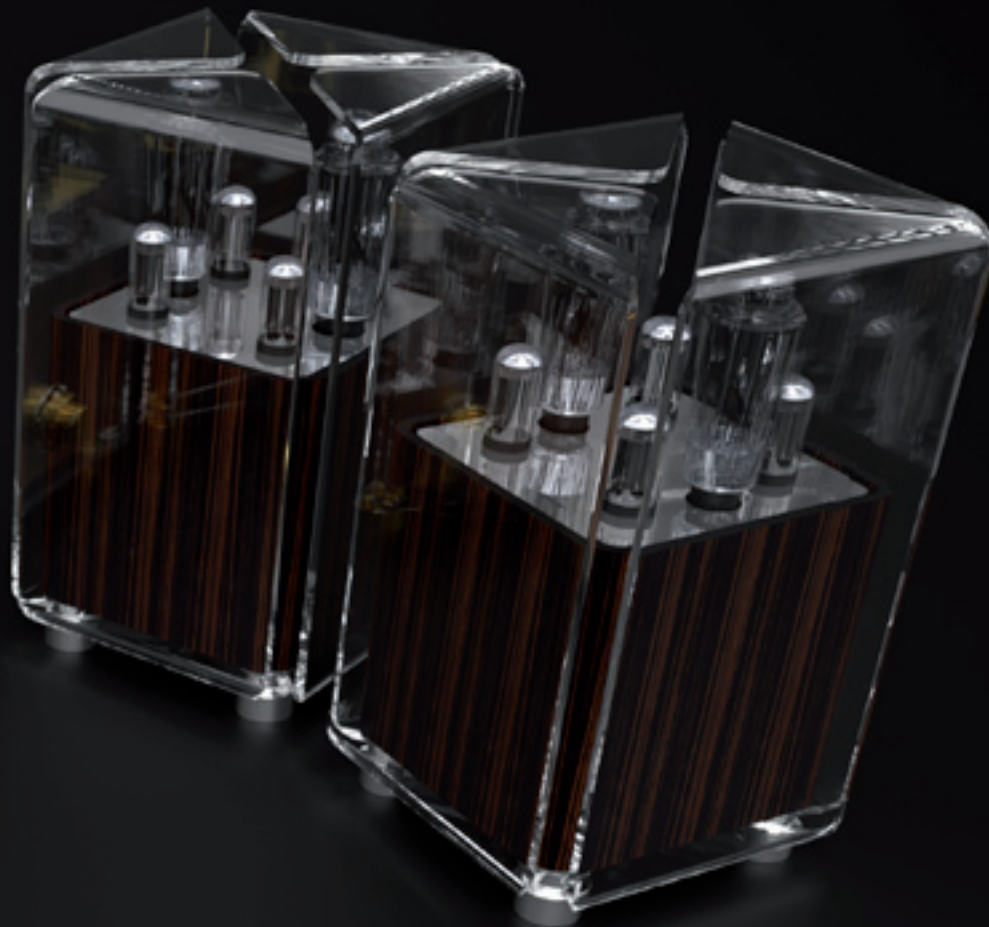
Engström & Engström use foil capacitors in order to avoid energy loss or undesirable mutual influences. No electrolytic capacitors are used.

Materials

The foil capacitors illustrate one example of the consistent choice of prime components and materials. Silver-plated wiring as well as silvered soldering material is used. Newly constructed high-quality tubes and dependable capacitors are other obvious choices. Not to mention the special C-core transformers which are even used for inter-stage coupling instead of capacitors wherever possible. In summary, every detail and aspect of THE LARS is designed to produce the purest sound.

THE LARS XLS™

THE LARS XLS is a fully balanced 32WPC monoblock power amplifier using 300B-XLS tubes, optimized for highest power within the limits of the tubes and for higher damping factor. The sound is full bodied, dynamic and with a punch in the low frequency area.



Technical data specification

THE LARS XLS:

Power output at 1% THD, 1 kHz: 36W

Sensitivity: 500mV for full output power

Input impedance: 20kohm

Output impedance: 4 or 8 Ohm selectable.
16 Ohm on special order

Frequency response
+0dB -1dB: 10Hz – 40 kHz

THD (BW 70kHz)
100 Hz to 10 kHz, 32W less than 0,5%

IMD (DIN) 250 Hz / 8 kHz
4:1, 24W: less than 0.3%

Hum and noise:
70dB below full output voltage

Tubes:
2 x 300B-XLS, 2 x 6V6GT, 6188, 2 x GZ34

Mains power:
115V / 230V selectable, 50Hz – 60Hz, 200W

Dimensions (W x H x D):
300 x 500 x 380mm each

Weight per monoblock: 23kg

Pure sound

The purity of THE LARS' sound has benefits beyond those of perceived hearing. Research has shown that impurities in the sound waves of music – what scientists call 'gray sound' – irritates the mind and causes stress and fatigue. TIM (Transient Inter Modulation) distortion is a key element of gray sound. There is zero TIM distortion in THE LARS. Ironically, listening to music to relax, can amplify stress caused by gray sound. You will never get tired of listening to the purity of sound which THE LARS amplifies.

Inputs and connectors

THE LARS type 1 has four inputs, two balanced XLR connectors and two unbalanced RCA connectors. The level attenuator and input selector are relay controlled and are maneuvered from one of the two amplifiers.

THE LARS XLS has two inputs, one balanced XLR connector and one unbalanced RCA connector. A switch on the back of the amplifier is used to select which input connector to use.

Design

The appearance of THE LARS, designed by Timo Engström, originates from a desire to match the quality of the sound with an equally elegant form. Timo Engström gathers inspiration from classic Swedish radio and TV furniture and his design pays homage to the Swedish tradition of creating a form to serve the function. THE LARS is available in ten different designs. Choose between palisander, ebony, black, maple and walnut with details plated in either chrome or gold.

The Mantle

The transparent outer mantle serves three purposes. It symbolizes the ability of THE LARS to provide authentic quality to voice. It protects the tubes, while allowing them to be visible. And it completes the esthetic impression by balancing the heavy base with an upward flowing lightness.

THE STORY BEHIND

Born from a desire to build the best amplifier in the world, THE LARS has become a reality for those seeking perfection. With vast experience in audio engineering and influenced by the latest research in sound reproduction, Engström & Engström has created some of the most exclusive high-end products.

Engström & Engström is a family company founded in 2009 by the engineer Lars Engström and the industrial designer Timo Engström. The amplifier THE LARS is the first of many products in the company's upcoming line. Now, one year after the launch THE LARS has already become an internationally renowned amplifier, praised for its exquisite musicality, extreme precision and visually striking appearance.

Beneath the genuine looks, inspired by traditional Scandinavian design, and the gracefully transparent mantle you will find the best components from the world's leading manufacturers. The parts are carefully assembled piece by piece by Lars Engström to give the world the opportunity to experience a sound which excels beyond the limits of purity – for generations to come.

Discover the full story on: www.thelars.se.

ENGSTROM  ENGSTROM

Engström & Engström, Ankargripgatan 3, SE- 211 19 Malmö
www.engstromengstrom.com | info@engstromengstrom.com
CEO: Lars Engström | +46 (0) 733 42 96 76 | lars@engstromengstrom.com
CBO: Timo Engström | +46 (0) 733 70 51 51 | timo@engstromengstrom.com